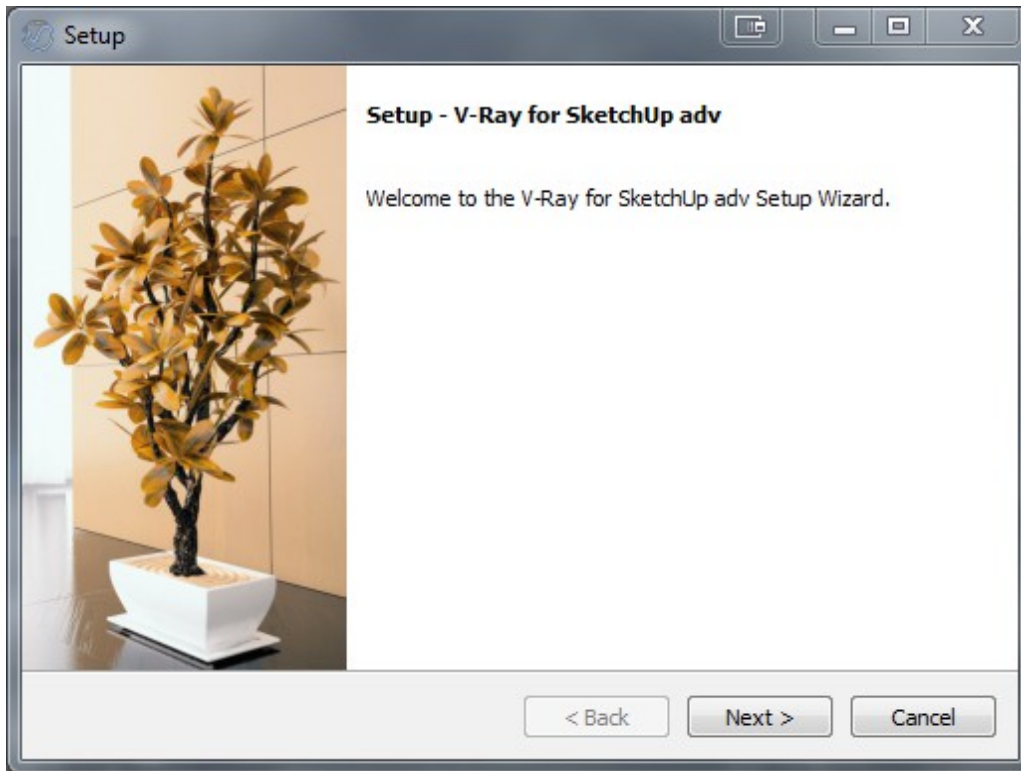
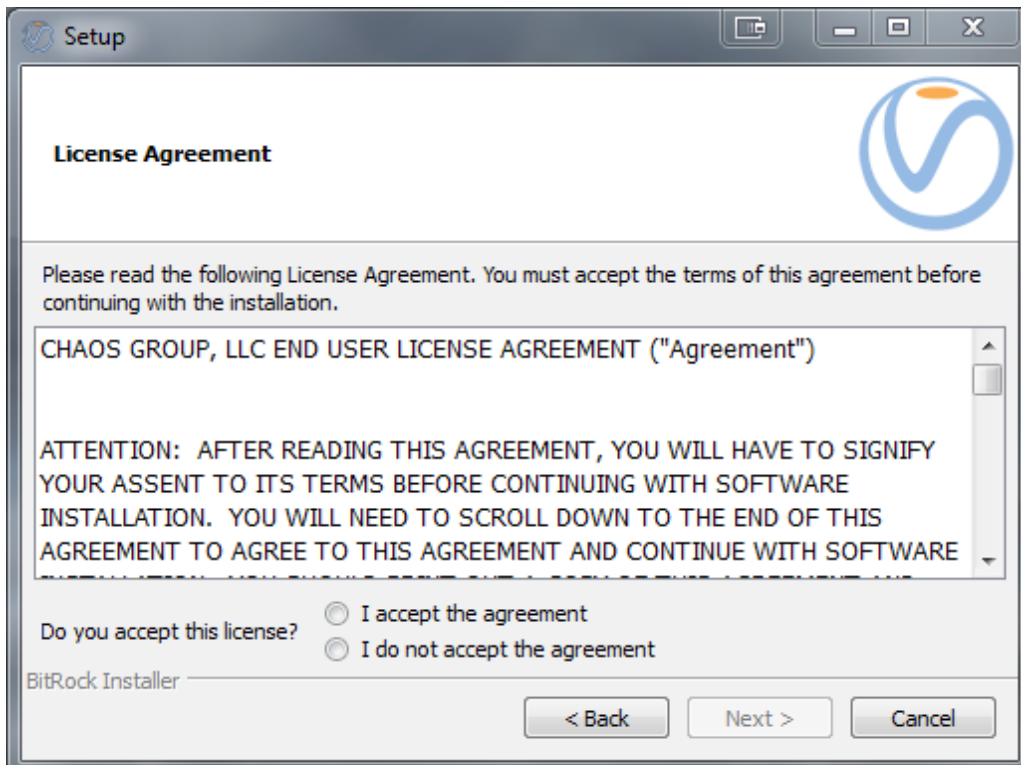


# V-Ray for SketchUp Installation Guide

1. Make sure that SketchUp is closed and begin the installation process. Click Next.



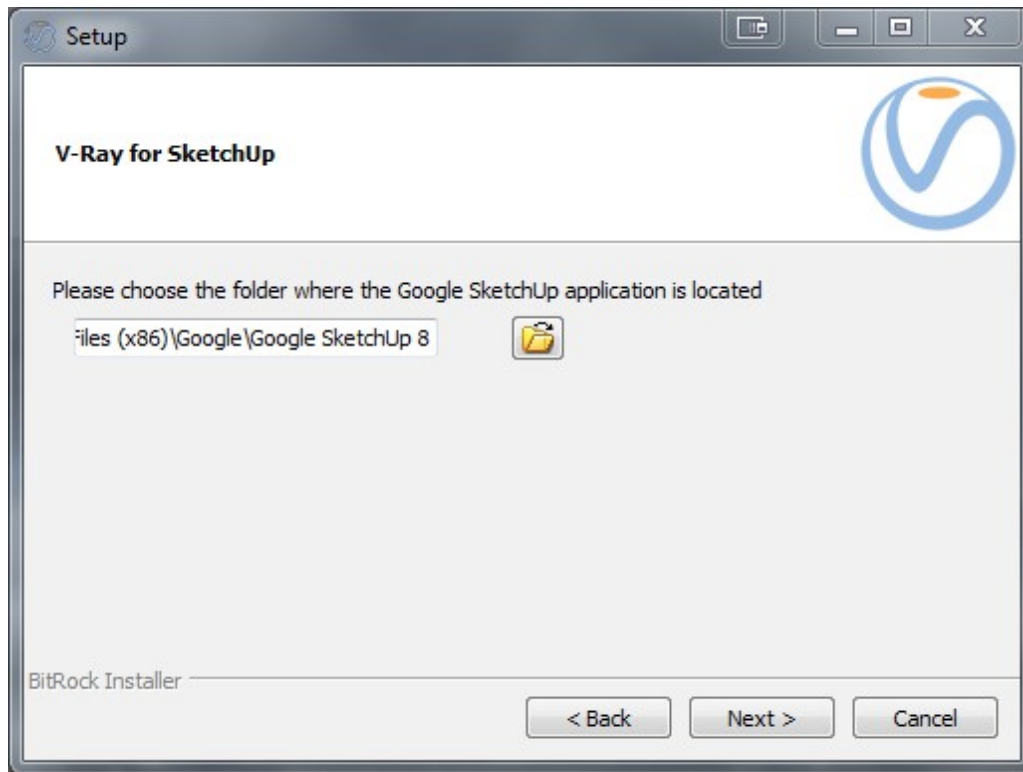
2. Click "I accept the terms of the license agreement", then click next.



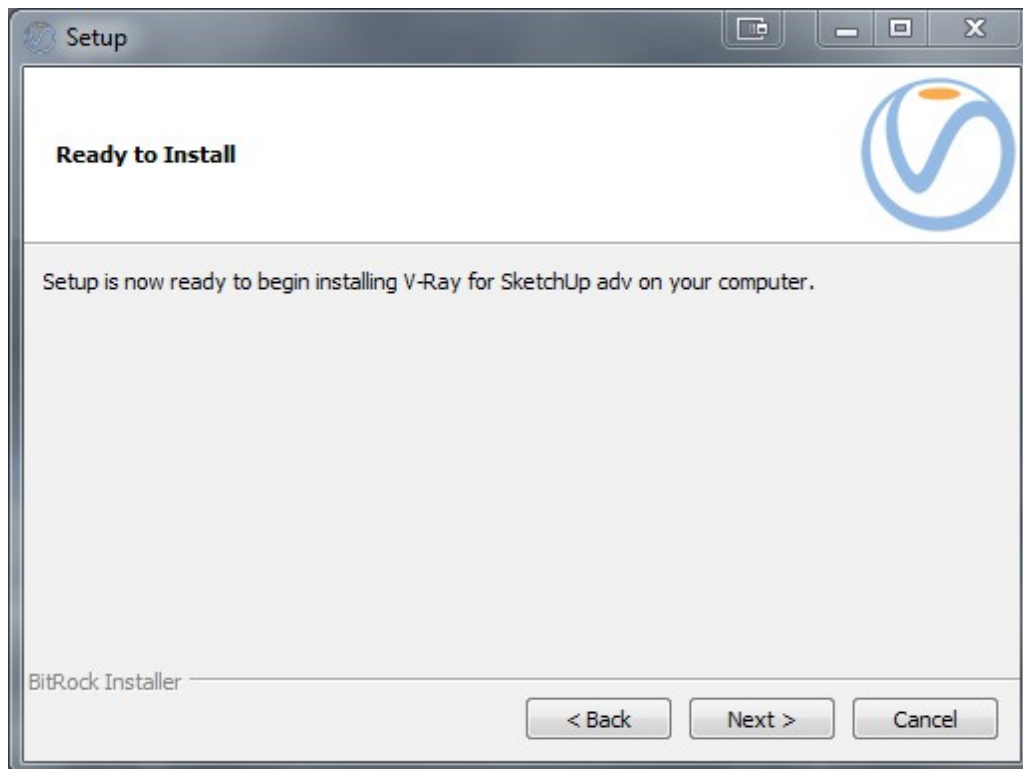
3. Select the components you want to install and clear the components you don't want to install. Click next when ready.
- a. **Microsoft C++ Redistributable** - This installs Microsoft Visual C++ 2005 Redistributable Package.
  - b. **V-Ray for SketchUp** - This will install the files needed to run V-Ray for SketchUp.
  - c. **The command line render spawner tool** - This installs the standalone version of V-Ray.
  - d. **The distributed rendering spawner** - This installs the files need to run V-Ray in distributed rendering mode.
  - e. **Utilities for dongle licensing** - This installs the V-Ray license server and utilities.
  - f. **V-Ray Tools** - This installs a collection of advanced tools to help you get the most out of V-Ray.
    - i. Filter generator tool
    - ii. Image to tiled multiresolution EXR converter
    - iii. Irradiance map viewer
    - iv. Lens analysis tool
    - v. OBJ GEO PLY to .vrmesh converter
    - vi. VRImg to OpenEXR converter



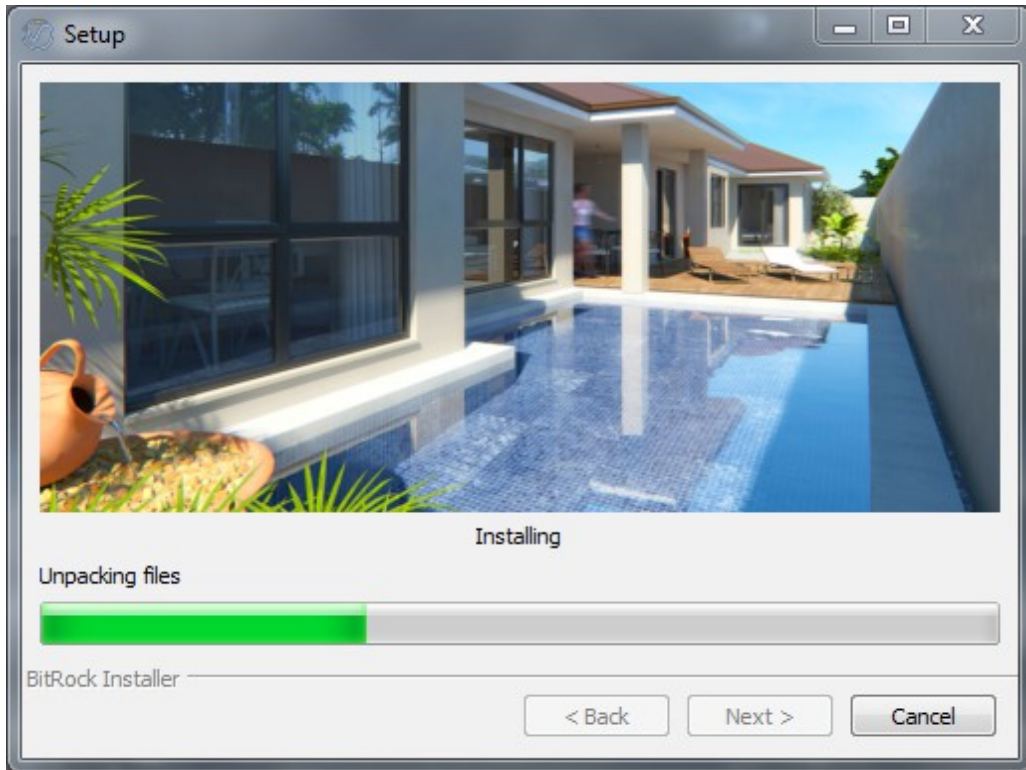
4. In this step you need to specify the root installation folder for SketchUp.



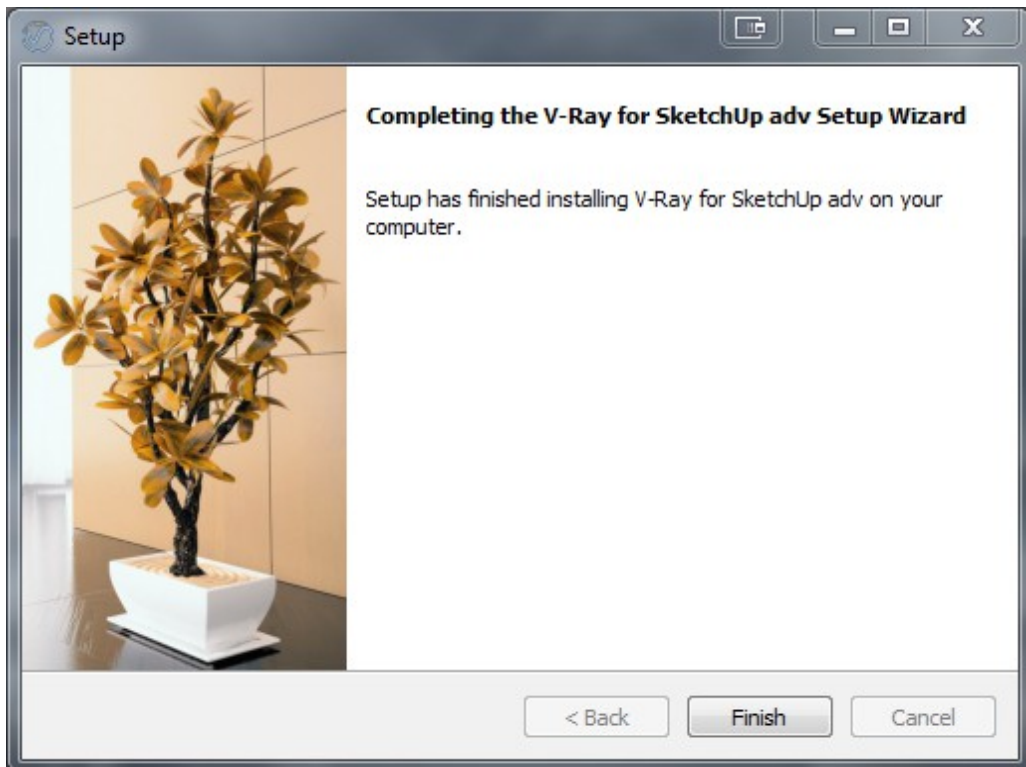
5. Click next to begin the installation.



6. Wait for the installation to complete.

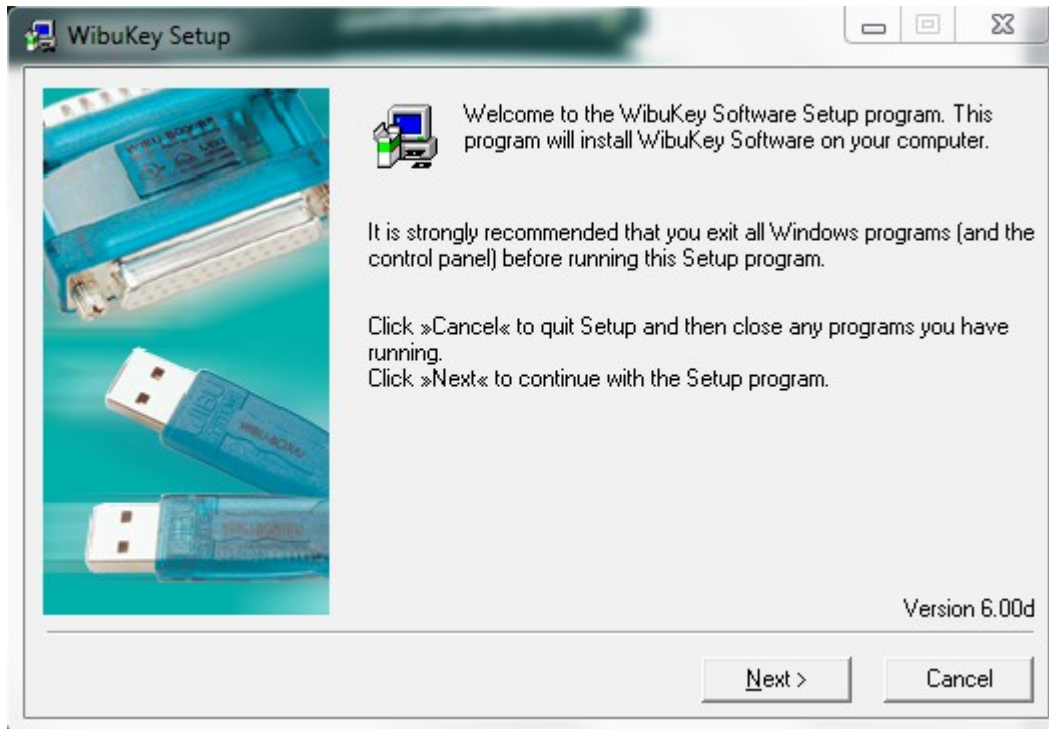


7. If you chose not to install the WIBU Key (dongle) Drivers click Finish to complete the installation. If you chose to install the WIBU Key (dongle) Drivers you will get the initial screen of the driver installer and need to skip to step #8.

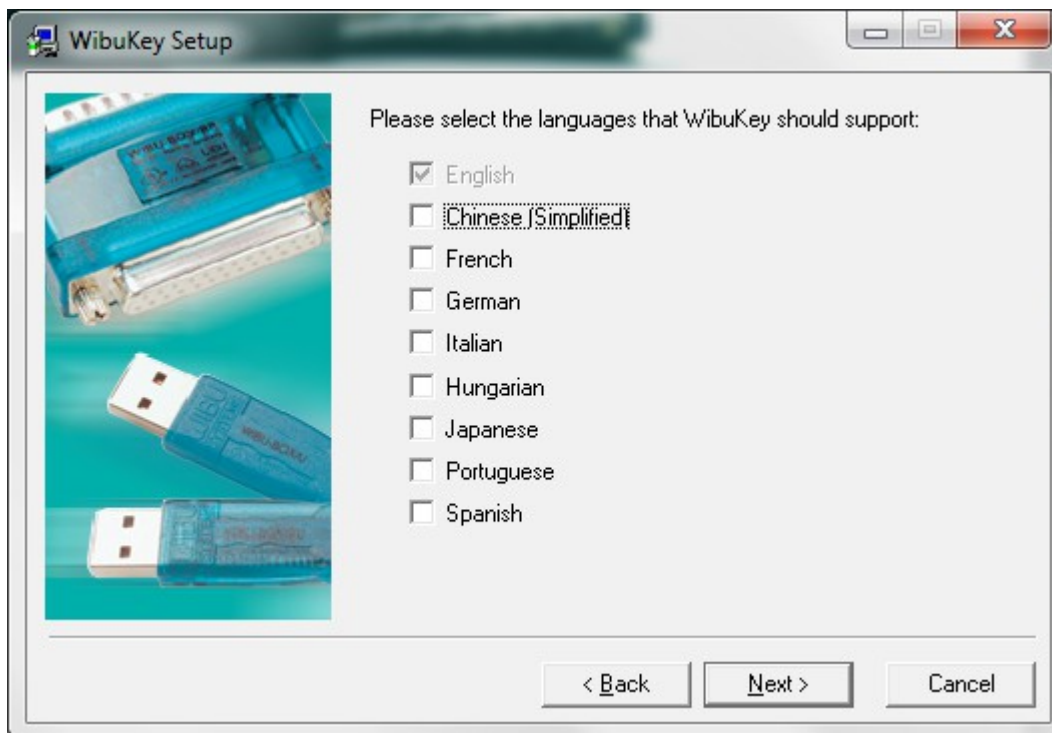


8. If you chose to install the WIBU Key (dongle) Drivers you will get the initial screen of the driver installer.

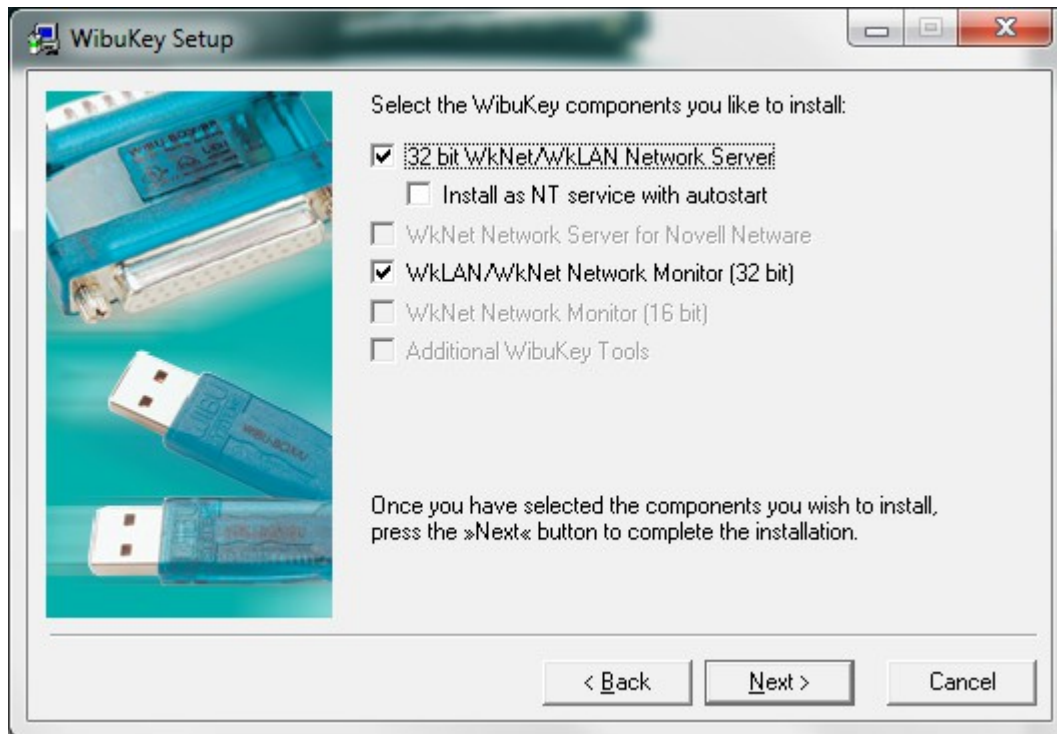
**NOTE:** The 32-bit installation of V-Ray includes only the 32-bit WIBU-KEY drivers. If you are installing the 32-bit version of V-Ray on a 64-bit operating system, you must download and install the dongle drivers separately from the WIBU-KEY website at [http://wibu.com/download\\_user.php](http://wibu.com/download_user.php)



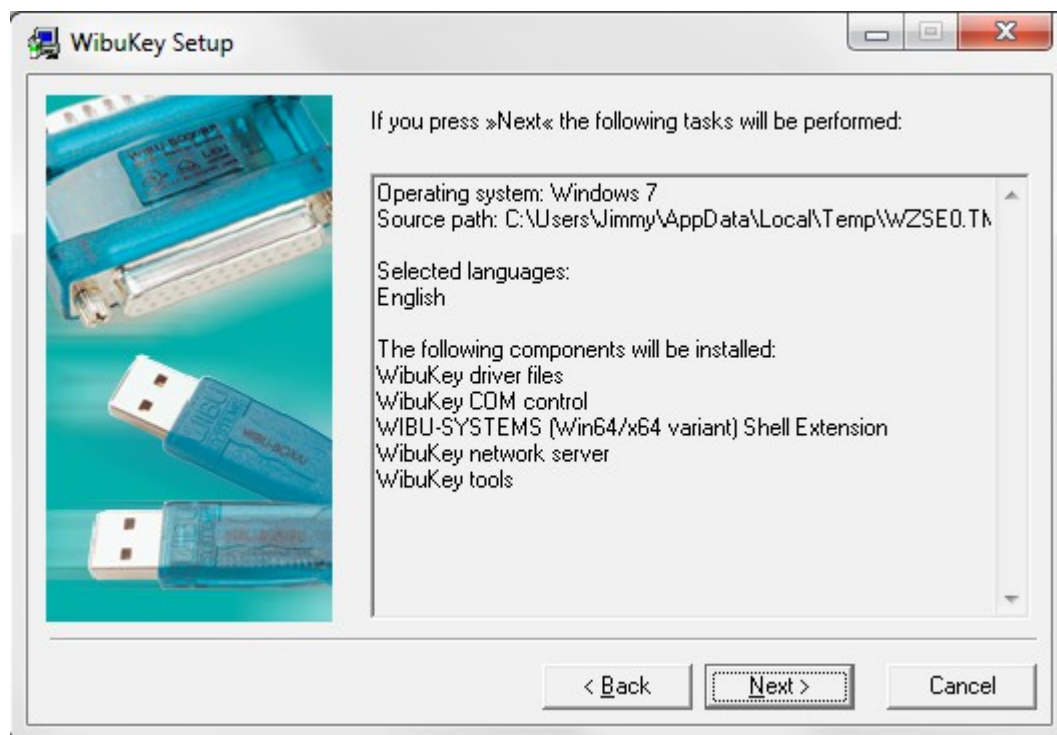
9. The next screen allows you to choose language support for the dongle drivers; click Next to go to the next screen.



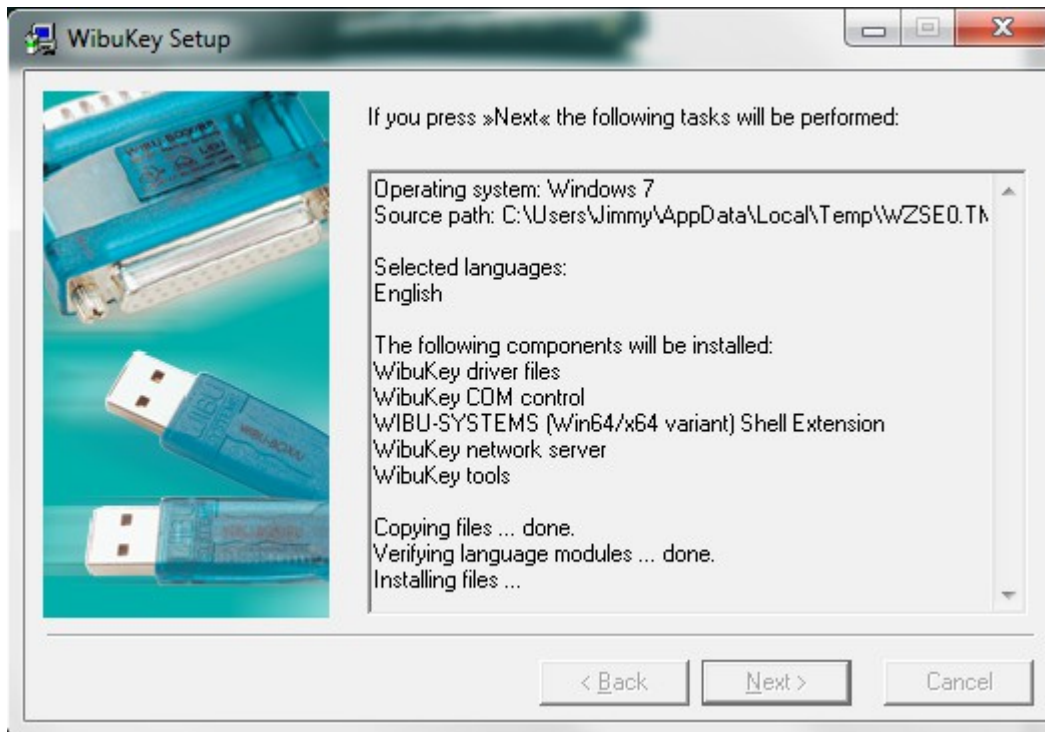
10. The next screen allows you to choose some components for the drivers; leave the settings at their default and click the Next button.



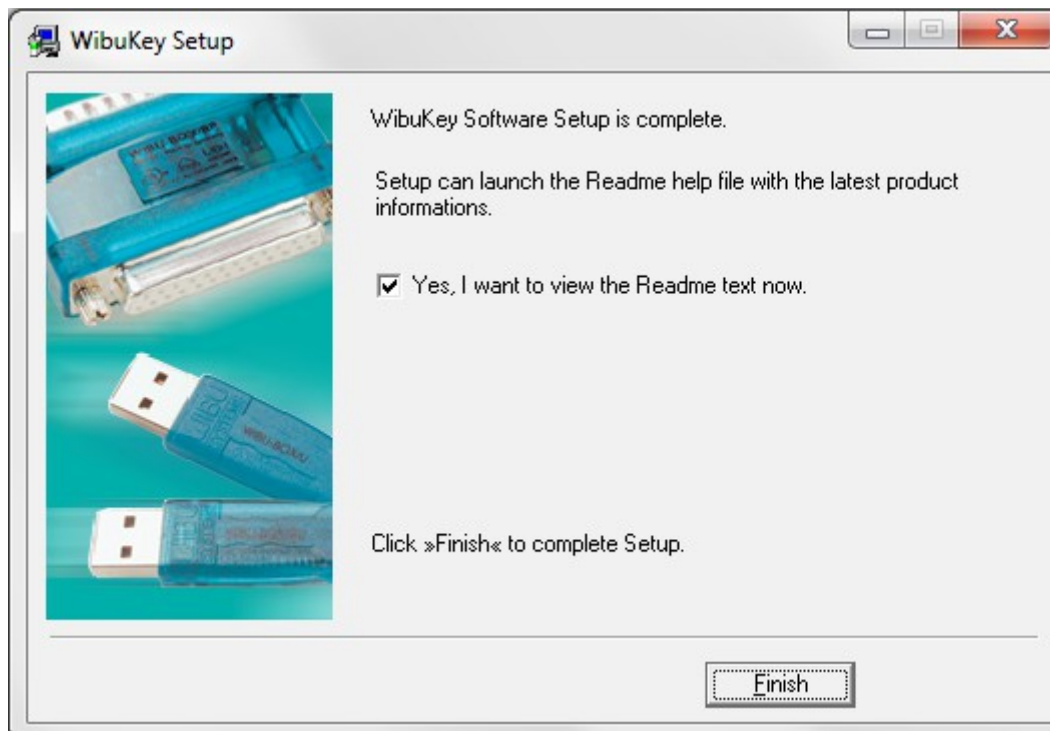
11. The next screen shows the options with which the dongle drivers will be installed. If you wish to make any changes, click the Back button; if you wish to cancel the dongle drivers installation, click the Cancel button. To proceed, click Next.



12. The WIBU key installer proceeds to copy the necessary files to your system. After the files are copied, click the Next button to go to the final screen of the dongle drivers installer.



13. You should get the final screen of the dongle drivers installer. Click Finish to exit.

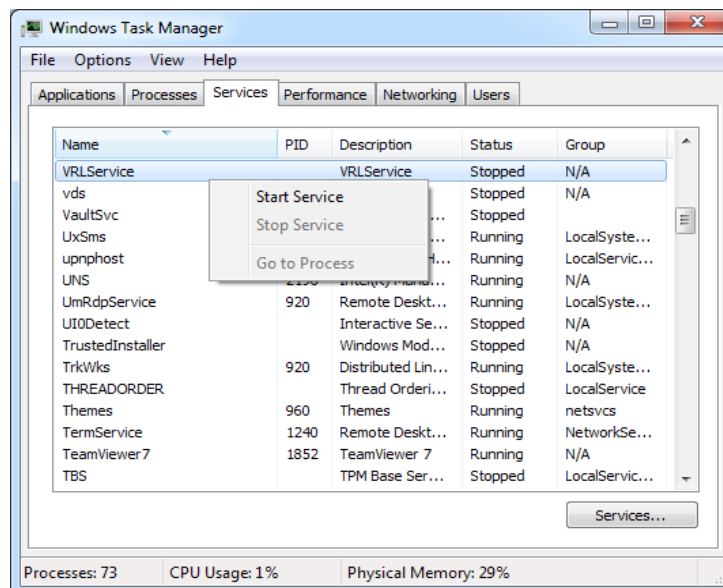


14. If the installation is successful, you will get a confirmation message box; Click OK to close it.
15. Now that the dongle drivers are installed, plug the V-Ray dongle into a free USB port on your machine.  
**Note:** if you have more than V-Ray dongle, you can plug them all into the same machine. The number of available licenses will be added from all dongles.



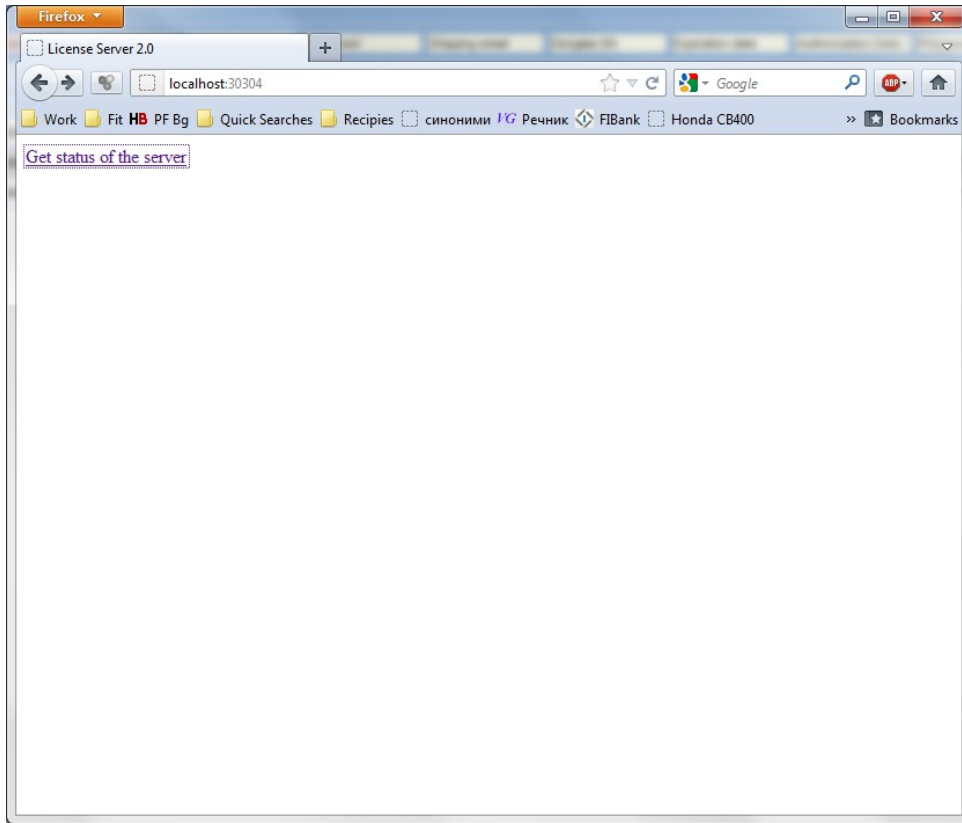
## Dongle Troubleshooting

1. The V-Ray license server will automatically start as a Windows Service. **Note:** In some rare cases you may have to restart the V-Ray License service to recognize the dongle. You can start or restart the V-Ray License service manually from the Task Manager in Windows. To start the service find the "VRLService" service, right click and select Start Service. To restart the service click on the "Services..." button find "VRLService" from the Service dialog and right click and select Restart.

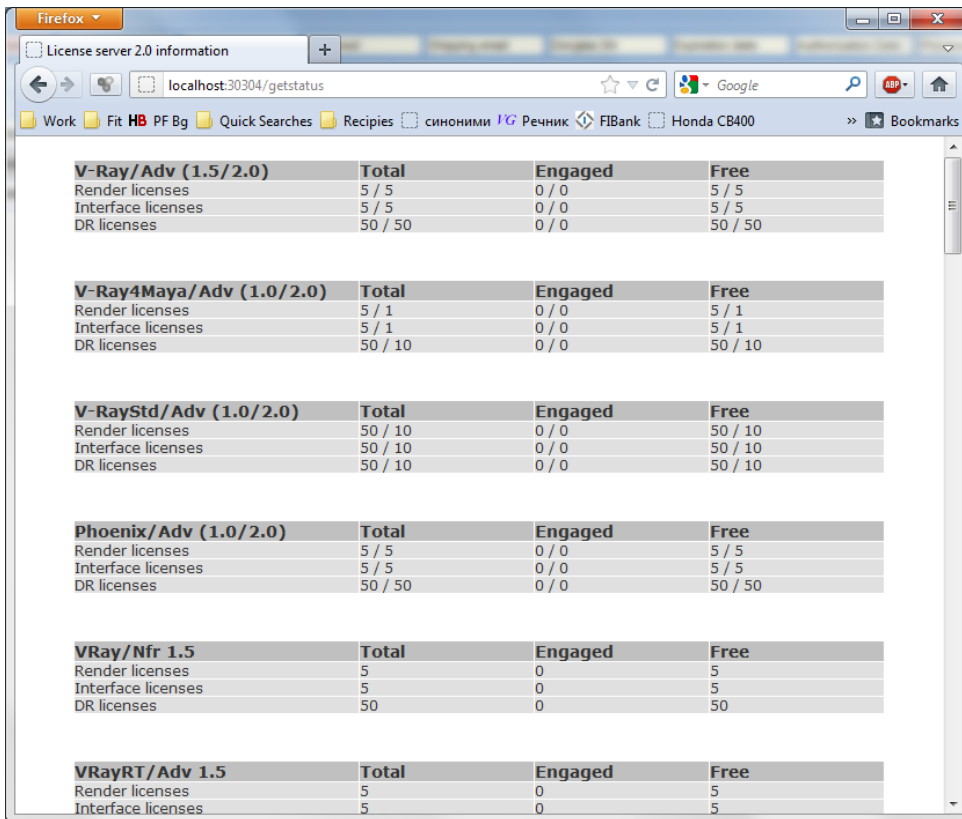


2. The V-Ray license service allows you to check its status from anywhere in the network using a regular web browser. For example, if you want to check the current status of the license service that you just started, open your web browser, and in the address field type <http://localhost:30304> and press Enter. You should get a page like below; choose the Get status of the server option to see more information.

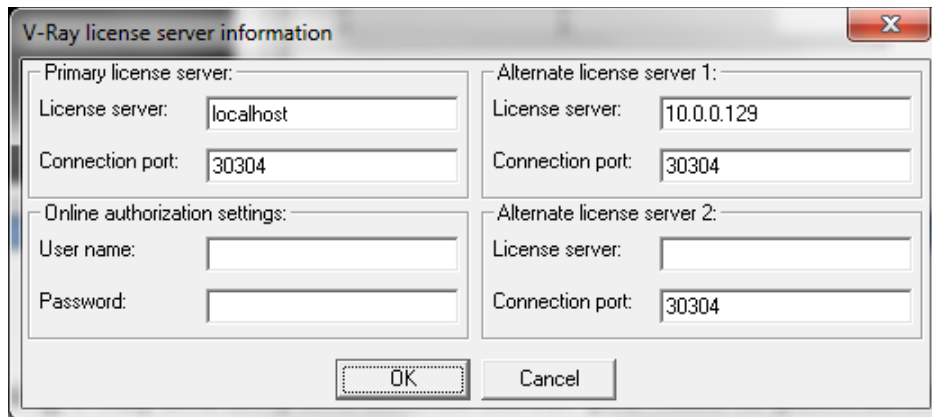




3. The Status page shows information about the total number of licenses available to the license server; how many of them are engaged and by which machine in the network etc.



4. When you have several machines running V-Ray and only one License Server you need to point all the machines to search for the license on that machine. To that go to *Start>All programs>Chaos Group>V-Ray for SketchUp>Licensing>Administration* installation folder and run the "Change V-Ray client license settings". In the "License server" field specified the IP address of the machine running the V-Ray license server.



## Reprogramming a dongle

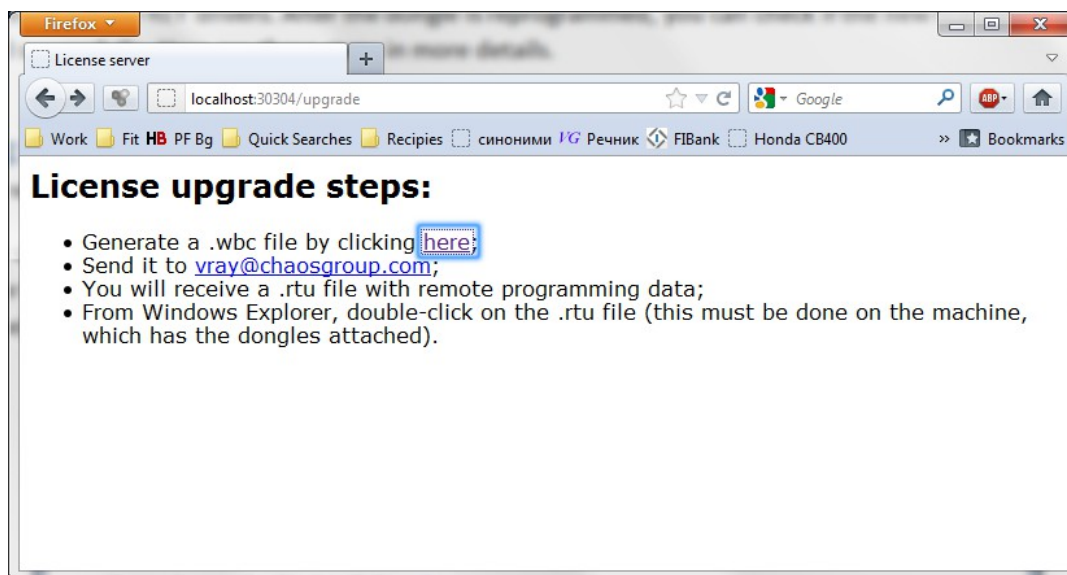
When you purchase the V-Ray renderer, your dongle will need to be reprogrammed with the corresponding number licenses. Reprogramming the dongle is a two-part process:

- In the first part, you need to send us a special file, created through the V-Ray License Server, which contains information identifying your specific dongle.
- Chaos Software will send you another file, which includes the new contents of your dongle. This is transferred onto the dongle by the WIBU-KEY drivers. After the dongle is reprogrammed, you can check if the new licenses/products have been added successfully. Here are these steps in more details.

### Creating a dongle remote programming context file (.wbc)

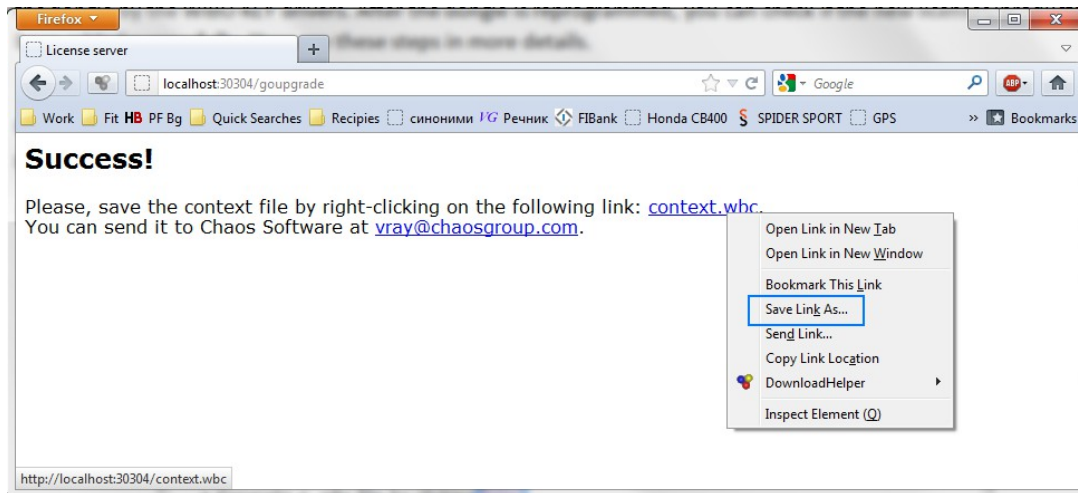
In order to reprogram a dongle, you first need to create a file which identifies your specific dongle

- Open a web browser and in the address bar enter "http://someserver:30304/upgrade " where "someserver" is the name or IP address of the machine where the V-Ray licensing service is running (or localhost if you are on that machine). This will open the following web page:



- A web-based wizard will appear. Click on the first link. Wait until the remote context file is created on the server (this normally takes 10-20 seconds)

3. When the Success! page appears, save the remote context file by right-clicking on the link and using Save Link As.../Save Target As...

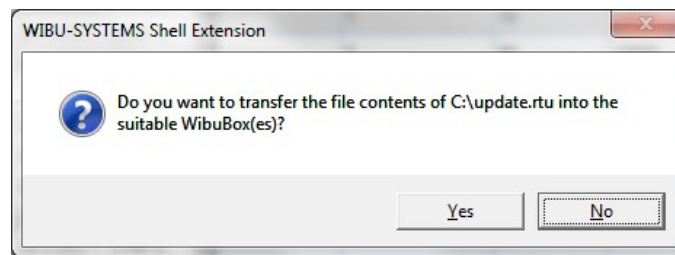


5. Email this file to vray@chaosgroup.com, along with any other relevant information.

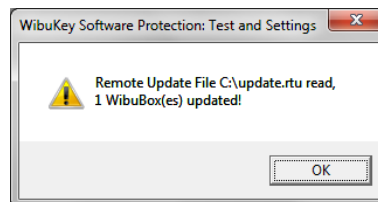
## Updating the contents of the dongle with a remote programming file (.rtu)

Once we receive the .wbc file, we will generate another file with extension .rtu that can be used by the dongle drivers to update the contents of the dongle.

1. When you receive the .rtu file, save it on the Desktop of the machine where the dongle is plugged.
2. Close the V-Ray licensing service, if it is running. You can do this either by right-clicking the V-Ray license service icon in the Task Bar and selecting Exit, or if it is running as a service - from the Control panel > Administrative tools > Services applet.
3. Double-click the saved .rtu file. The dongle software will ask you whether you really want to transfer the file to the dongle. Click Yes to update your dongle.



4. If the contents of the file is successfully transferred, you will get a confirmation dialog similar to the one below; click OK to close the dialog.



5. Start the V-Ray licensing service again